

Psychosis

1 Substance/Medication - Induced Psychosis

Delusions and/or Hallucinations which...

1. Developed during or soon after substance intoxication, withdrawal, or exposure to a medication
2. Can be explained by the pharmacology of the implicated substance/medication

Consider independent psychotic disorder if...

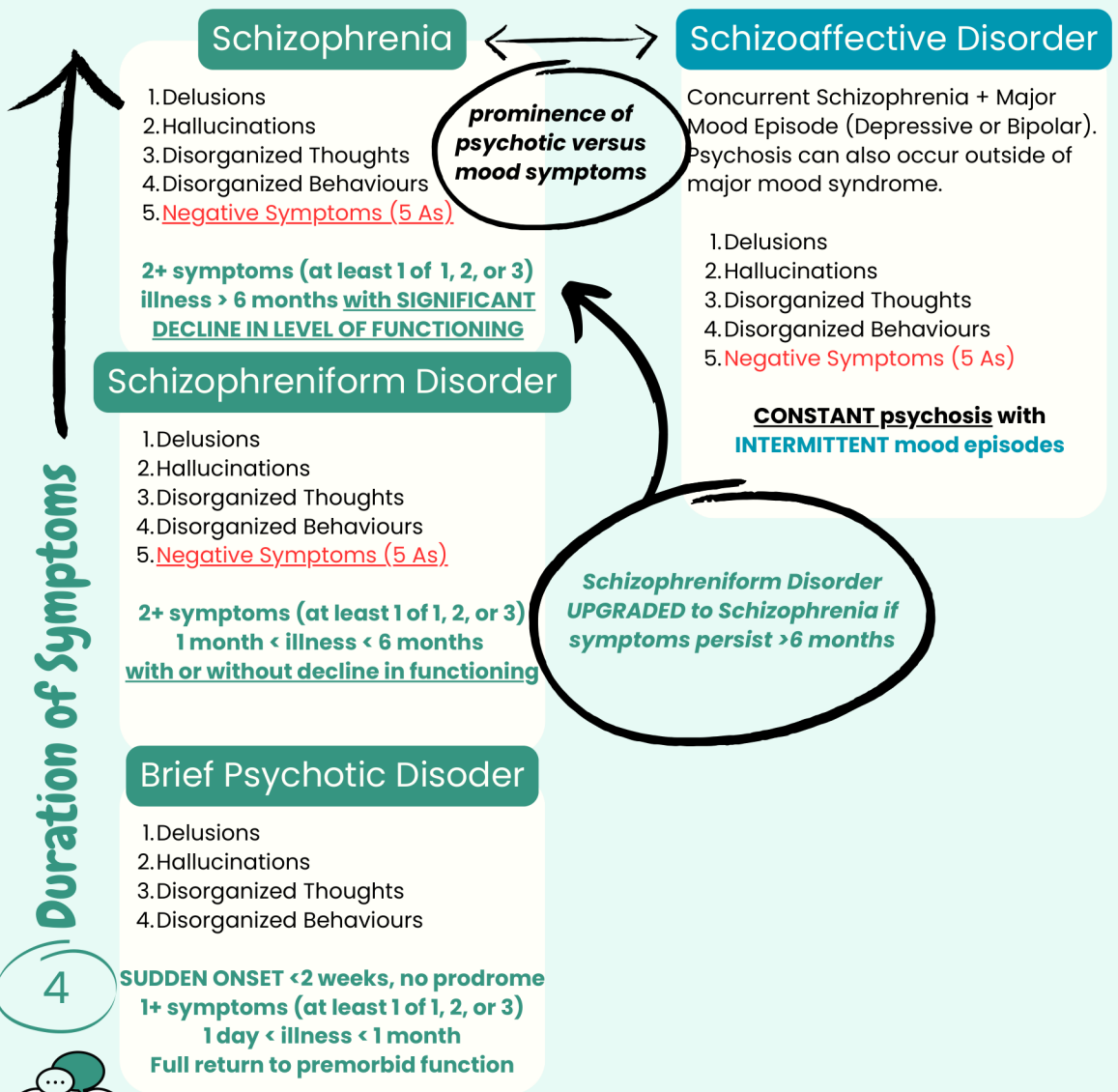
1. Symptoms preceded the onset of substance/medication use
2. Symptoms persist for a substantial period of time (eg. 1 month) after the cessation or acute withdrawal or severe intoxication
3. History of recurrent, non-substance/medication-related episodes

3 Delusional Disorder

1+ delusions for at least 1 month with NO PROMINENT HALLUCINATIONS

- Has never met criteria for schizophrenia
- Hallucinations (if present) are not prominent and are related to delusional theme (ex. sensation of being infested by bugs associated with delusions of infestation)
- Apart from impact of delusion(s) and its ramifications, functioning not markedly impaired and behaviour not obviously bizarre or odd

- 1) Known substance use?
- 2) Significant mood component?
- 3) Limited to delusions?
- 4) Duration of symptoms and level of impairment?



Duration of Symptoms

Involvement of Mood

